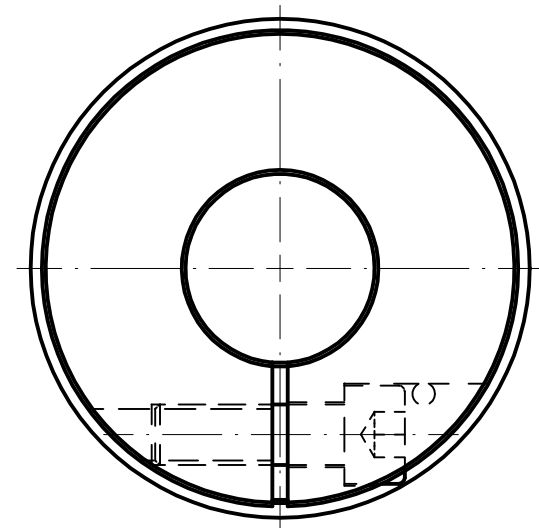


M8 - EASY
TA=35 Nm*

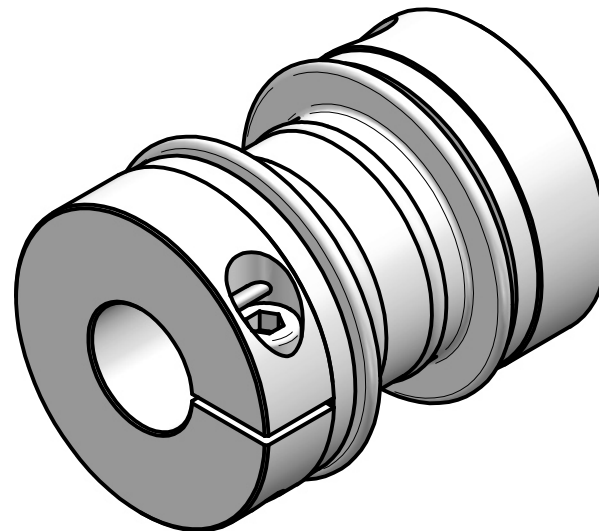
* reduced tightening torque
TA=30 Nm for bore diameter D > Ø28



brass wire press-fit connection

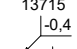
technical data:

nominal torque: 65 Nm
maximum torque: 130 Nm
torsional stiffness: 12 Nm/arcmin
moment of inertia: $0,25 \cdot 10^{-3} \text{ kgm}^2$
max. axial shaft displacement: $\pm 0,3 \text{ mm}$
max. lateral shaft displacement: $0,3 \text{ mm}$
axial spring rate: 90 N/mm
lateral spring rate: 80 N/mm
temperature range: -40° up to $+200^\circ\text{C}$
maximum speed: 14.000 rpm
D1/2min/max = Ø13 / Ø35 mm
mass: approx. 0,4 kg



material:

bellows: stainless steel
hubs: high tensile aluminium
clamping screws: ISO 4762 - 12.9
press-fit wire: brass

		Änderung				Werkstoffbezeichnung	Werkstoffnummer	Maßstab
						-	-	1:1
						Rohteil-/Vorteilnummer	Gewicht	
						-	- kg	
					metal bellows coupling			
		gepr.			KR 65 - standard			
Passung	Abmaß	gez.	12.05.17	Be				
DIN ISO 13715	DIN ISO 2768-mK		Datum	Name	Benennung			
	0,5 ... 6 ± 0,1				Format A4	MB-083 10770-e		
	6 ... 30 ± 0,2				Artikelnummer			
	30 ... 120 ± 0,3				Ersatz für			
	120 ... 315 ± 0,5				-			
	315 ... 1000 ± 0,8				ersetzt durch			
					-	-		