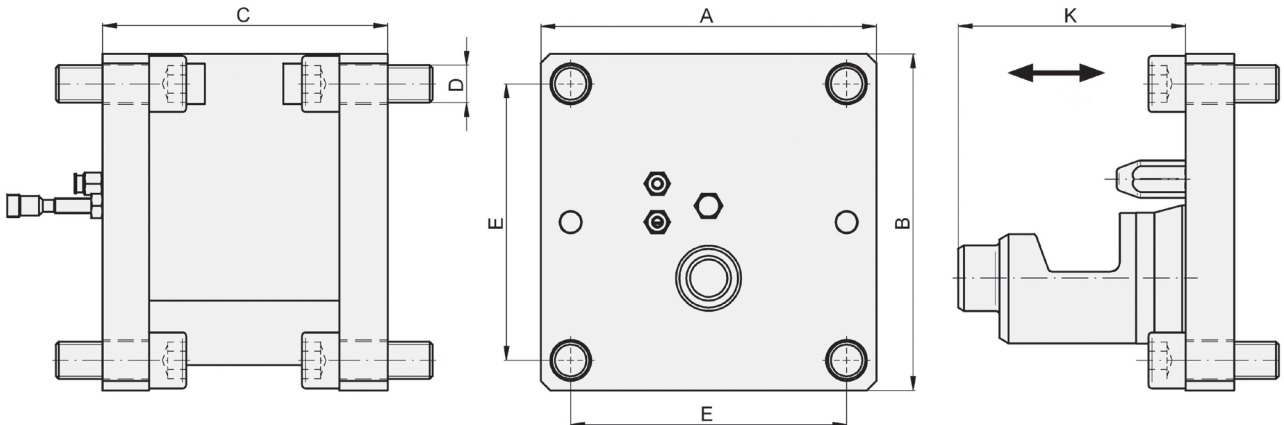


# Sectional Rail Coupling I Type PKH

horizontal linear coupling for automatic or manual clamping



Technical data and dimensions [mm]: measure of length according to DIN ISO 2768 mH

type	*operating forces			**bending	TA	weight	couple	compen-	dimensions [mm]				
	FB [kN]	FBmin [kN]	FQ [kN]	moment [Nm]	(PKH-M) [Nm]	[kg]	distance K	sation hor.	width A	height B	length C	bore pattern D	pattern E
PKH-M-80x80	20	-	25	1000	20	2,7	53	3	80	80	68	4x M8	66
PKH-P-80x80	12,5(19)	3	25	1000	-	2,9	53	3	80	80	80	4x M8	66
PKH-M-100x100	30	-	35	2000	25	4,8	64	4	100	100	81	4x M10	82
PKH-P-100x100	18(26)	4	35	2000	-	5,1	64	4	100	100	93	4x M10	82
PKH-M-120x120	40	-	60	3000	30	7,2	65	4,5	120	120	83	4x M12	100
PKH-P-120x120	30(45)	6,5	60	3000	-	8,7	82	4,5	120	120	115	4x M12	100
PKH-M-140x140	60	-	70	6500	35	10,6	74	5	140	140	94	4x M14	115
PKH-P-140x140	40(60)	10	70	6500	-	12,7	88	5	140	140	128	4x M14	115
PKH-M-160x160	70	-	100	7500	40	15,2	80	5	160	160	105	4x M16	132
PKH-P-160x160	50(75)	11,5	100	7500	-	18,6	109	5	160	160	140	4x M16	132
PKH-M-180x180	80	-	150	13000	50	23	93	6	180	180	122	4x M20	148
PKH-P-180x180	60(90)	14	150	13000	-	26	108	6	180	180	156	4x M20	148
PKH-M-200x200	80	-	150	15000	50	29	95	7	200	200	124	4x M20	168
PKH-P-200x200	80(115)	18,5	150	15000	-	34,7	126	7	200	200	173	4x M20	168

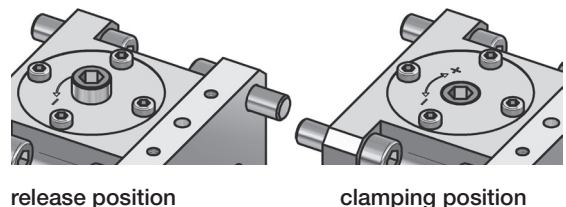
\*FB - tolerable axial operating force at nominal pressure PN = 6 bar (10 bar)  
 FBmin - minimal operating force at no pressure P = 0 bar  
 FQ - tolerable vertical operating force (pressure-independent)

\*\*tolerable operating values M x / y / z at nominal pressure PN = 6 bar

materials: tempered steel - nitrated

**Note:** version with customer-specific energy coupling for supplying the changing rail with power, air booster (does not belong to the scale of delivery) for 10 bar operating pressure or different sectional profiles (A x B) on demand.

manual clamping with operating hex head - top view:  
 TA actuation torque for version „M“



release position

clamping position

order example:

sectional rail coupling

PKH - P - 140 x 140 - active part

„P“ - automatic clamping (pneumatic) / „M“ - manual clamping

Size 140 x 140 - sectional profile

active part / passive part

