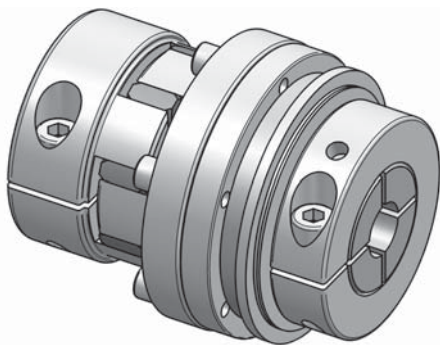


# Safety coupling I Series SKB-EK for direct drives

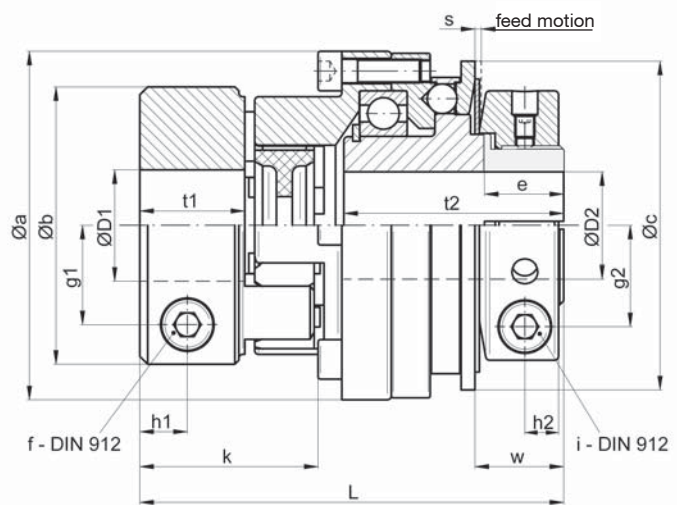
// with elastomer attachment for direct drives // with radial clamping hub on both sides  
 // plug in // flexible // backlash free // oscillation dampening

## Technical data:

SKB -EK size	setting range disengagement torque $T_{KA}$ [Nm]	moment of inertia [ $10^{-3} \text{kgm}^2$ ]	mass approx. [kg]	torsional stiffness [Nm/arcmin]	max. shaft dis- placement [mm] axial $\pm$ lateral	tightening torque of screws „f“ [Nm] „i“ [Nm]	$\varnothing D1$ min max	$\varnothing D2$ min max
6	2 - 6						8 20	6 16
12	6 - 12	0,13	0,44	0,24	0,5 0,1	M5[8] M5[10]	8 20	8 16
15	8 - 15						12 32	10 25,4
30	13 - 30	0,5	1	0,61	0,5 0,1	M6[14] M6[18]	12 32	12 25,4
45	22 - 45						14 32	14 25,4
60	25 - 60						16 38	18 35
100	40 - 100	1,5	2	1,05	1 0,1	M8[35] M8[40]	19 38	18 35
150	60 - 150						22 38	24 35
230	80 - 230	5,6	4,2	2,0	1 0,12	M12[115] M10[80]	24 43	24 42
330	130 - 330						32 43	32 42
500	200 - 500	17,0	8,6	8,0	1 0,15	M14[185] M14[220]	30 70	28 58
800	350 - 800						42 70	40 58
1000	500 - 1000	79,0	19,5	12	1 0,1	M14[185] M16[290]	48 70	42 100



**Material:** safety part: heat treated steel  
 clamping hub: high tensile aluminium  
 elastomer spider: Polyurethane – 98 Shore-A  
 screws: nickel plated



Dimensions [mm]: length dimensions according to DIN ISO 2768 cH

SKB-EK	$\varnothing a$	$\varnothing b$	$\varnothing c$	e	g1	g2	h1	h2	k*	L $\pm 1$	s	t1	t2	w
6/12	52,5	40	48	14	13	13,5	8	6	33	77	0,9	17	41	16
15/30/45	69	55	66	16	20	19,5	10	7,5	39	91,5	1,2	21	48	18,5
60/100/150	88	70	83	20	25	25,5	12	8,5	45	107	1,6	26,5	55,5	22
230/330	115	85	109	23	29	32	14	10,5	54	134	1,8	31	72	26,5
500/800	137	120	132	32	44	42	18	13,5	71	167,5	2,5	38	87,5	37
1000	181	120	185	74	44	69	18	17/30	72	204	3,7	38	89	74

\* **Note:** other shore-hardness of elastomere spider are possible on request  
 coupling side with conical hub see series SKB-ES

Ordering example: SKB-EK 45 -  $D1 = \varnothing 28^{G7}$  -  $D2 = \varnothing 24^{H7}$  -  $T_{KA} = 35 \text{ Nm}$