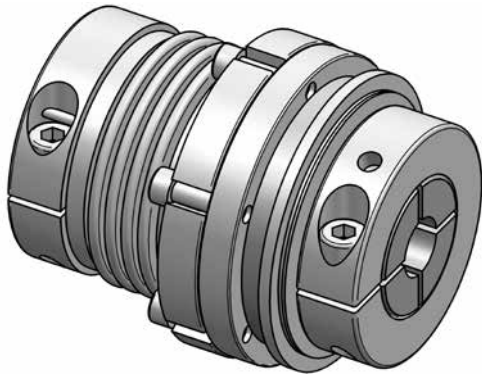


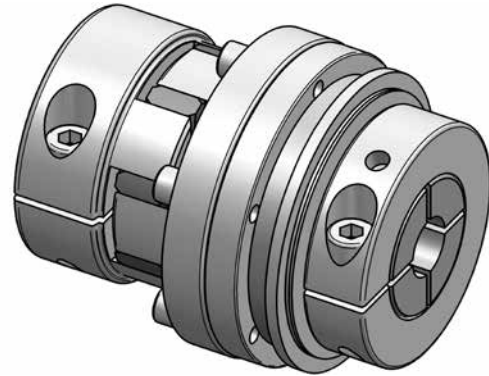
## Safety Couplings I *for direct drives*

- ✓ optimum overload and crash protection for direct drives
- ✓ with coupling attachment ✓ modular system with numerous variants
- ✓ simple installation ✓ frictional shaft-hub connection
- ✓ compact design ✓ low moment of inertia

### Series SKB-KP / SKY-KS with bellows attachment



### Series SKB-EK / SKY-ES with elastomer attachment



The safety couplings series SKB-K and SKB-E from JAKOB are combinations of the well-tried disengagement function with coupling elements for balancing misalignments between drive and output shaft. From a large program of diverse types, metal bellows or elastomer attachments can be selected. While the main features of metal bellows are very high torsional stiffness and low restoring forces, elastomer couplings feature robustness, excellent oscillation dampening and the possibility of plug-in fitting. Due to the screw connection between coupling element and safety part, a replacement of the coupling attachment is possible at all times, in case of damage or a change of operational parameters.

### The following safety couplings series for direct drives are available:

**Series SKB-KP** -> with 4-corrugation metal bellows / on bellows side with easy-to-fit radial clamping hub

**Series SKY-KS** -> with 4-corrugation bellows / on bellows side with conical bushing for small shaft diameters

**Series SKB-EK** -> with elastomer spider - 98 Shore A / on coupling side with plug-in, radial clamping hub

**Series SKY-ES** -> with elastomer spider - 98 Shore A / on coupling side with plug-in, conical hub

**note:** safety couplings series SKB with clamping hub - series SKY with conical bush

