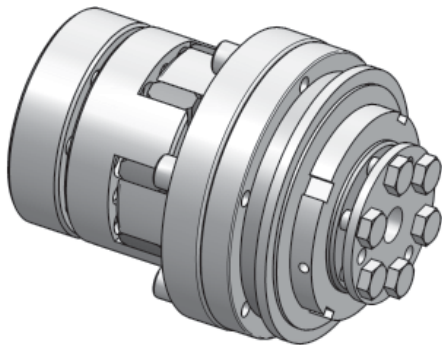


Safety coupling I Series SKY-ES for direct drives

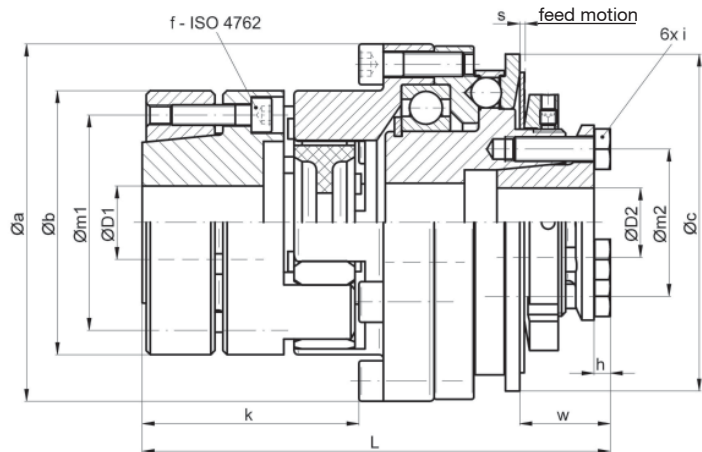
- /// with elastomer attachment for direct drives // with conical clamping hub
- /// elastomer coupling with conical hub // plug in, backlash free, flexible, robust, oscillation dampening

Technical data:

SKY -ES size	setting range		moment of inertia [10 ⁻³ kgm ²]	mass approx. [kg]	torsional stiffness [Nm/arcmin]	max. shaft dis- placement [mm]		tightening torque of screws		ø D1		ø D2	
	disengagement torque T _{KA} [Nm]					axial ±	lateral	„f“ [Nm]	„i“ [Nm]	min	max	min	max
6	2	- 6	0,13	0,5	0,24	0,5	0,1	6xM4[4]	ISO4762/M3[2]	9	19	5	11,5
12	6	- 12								9	19	5	11,5
15	8	- 15	0,5	1,0	0,6	0,5	0,1	4xM5[8]	ISO4762/M4[4]	12	26	9	17
30	13	- 30								12	26	9	17
45	22	- 45								12	26	10	17
60	25	- 60	1,4	1,9	1,1	1	0,1	8xM5[8]	ISO4017/M6[18]	12	36	12	24
100	40	- 100								12	36	12	24
150	60	- 150								14	36	14	24
230	80	- 230	5,5	4,3	2	1	0,12	4xM8[35]	ISO4017/M6[18]	19	40	18	35
330	130	- 330								19	40	22	35
500	200	- 500	18,5	8,8	8	1	0,15	4xM12[115]	ISO4017/M8[35]	25	60	28	44
800	350	- 800								28	60	30	44
1000	500	- 1000	57	16	12	1	0,1	4xM12[115]	ISO4017/M12[60]	48	60	40	70



Material: safety part: heat treated steel
 hub: high tensile aluminium
 clamping ring: heat treated steel
 elastomer spider: Polyurethane – 98 Shore-A
 screws: nickel plated



Dimensions [mm]: length dimensions according to DIN ISO 2768 cH

SKY-ES	Øa	Øb	Øc	h	k	L±1	Øm1	Øm2	s	t1	t2	w
6/12	52,5	40	48	3	41	83	31	19	0,9	21	15	14
15/30/45	69	55	66	4	48	100	43	27	1,2	25	18	18
60/100/150	88	65	83	4	53,5	115,5	53	36	1,6	30	24	22
230/330	115	80	109	4	68	145,5	64	50	1,8	40	27	24
500/800	137	120	132	5,3	94	187	96	62	2,5	54	32	33
1000	181	120	185	7,5	95	218	96	98	3,7	54	45	64

Ordering example: SKY-ES 230 - D1 = 33^{H7} - D2 = Ø 28^{H7} - T_{KA} = 200 Nm