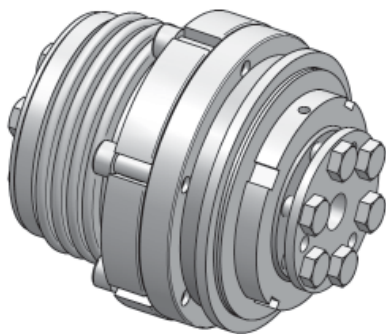


Safety coupling I Series SKY-KS for direct drives

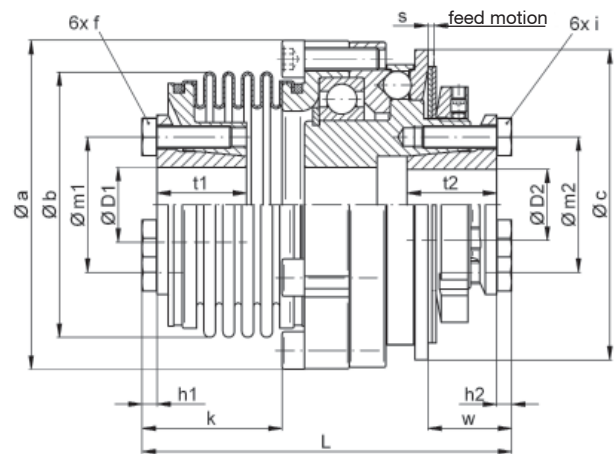
- /// with bellow attachment for direct drives
- /// with conical clamping hub on both sides
- /// low restoring forces
- /// compensation of misalignments

Technical data:

SKY-KS size	setting range disengagement torque T_{KA} [Nm]	moment of inertia $[10^{-3}kgm^2]$	mass approx. [kg]	torsional stiffness [Nm/arcmin]	max. shaft displacement [mm]		tightening torque of screws		$\varnothing D1$		$\varnothing D2$	
					axial \pm	lateral	f [Nm]	i [Nm]	min	max	min	max
6	2 - 6											
12	6 - 12	0,12	0,5	2,1	0,5	0,15	M4[3]	M3[2]	6	16	5	11,5
15	8 - 15								9	19	9	17
30	13 - 30	0,44	0,98	9	0,5	0,2	M4[4]	M4[4]	9	19	9	17
45	22 - 45								10	19	10	17
60	25 - 60								12	24	12	24
100	40 - 100	1,4	1,9	20	0,6	0,2	M6[14]	M6[14]	12	24	12	24
150	60 - 150								14	24	14	24
230	80 - 230	5,1	3,9	28	0,8	0,2	M6[14]	M6[14]	18	35	18	35
330	130 - 330								22	35	22	35
500	200 - 500	12,5	6,7	52	0,8	0,2	M8[34]	M8[34]	28	42	28	42
800	350 - 800	14,6	7,7	106	0,7	0,2	M10[65]	M8[34]	30	48	30	44
1000	500 - 1000	58	16	80	1	0,3	M10[65]	M12[115]	40	60	40	62
2000	800 - 2000	69	18,5	140	1	0,3	M12[115]	M12[115]	42	70	42	62
3000	1500 - 3000	70,5	19	260	1,4	0,2	M12[115]	M12[115]	48	70	48	62



Material: safety part: heat treated steel
conical hub: heat treated steel
bellows: stainless steel
screws: nickel plated



Dimensions [mm]: length dimensions according to DIN ISO 2768 cH

SKY-KS	$\varnothing a$	$\varnothing b$	$\varnothing c$	h1	h2	k*	L ± 1	$\varnothing m1$	$\varnothing m2$	s	t1	t2	w
6/12	52,5	39,5	48	4	3	37,5	80	27	19	0,9	19	15	14
15/30/45	69	56	66	2,8	4	34,8	86	30	27	1,2	18	18	18
60/100/150	88	71	83	4	4	37,5	99	36	36	1,6	24	24	22
230/330	115	82	109	4	4	40	117	50	50	1,8	27	27	24
500	137	101	132	5,3	5,3	50	143	62	62	2,5	32,5	32	33
800	137	122	132	6,4	5,3	60	152	70	62	2,5	36	32	33
1000	181	132	185	6,4	7,5	85	208	83	90	3,7	44	45	64
2000/3000	181	157	185	7,5	7,5	88,5	211	98	90	3,7	45	45	64

* Note: alternative length are possible on request

Ordering example: SKY-KS 500 - D1 = 38^{H7} - D2 = \varnothing 32^{H7} - T_{KA} = 400 Nm