

Metal bellows coupling I Series KG / KG-VA

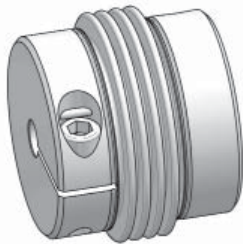
- /// 4-corrugation bellows // very short design // torsional stiff
- /// all-steel-version – up to 350°C // wear and maintenance free
- /// simple installation - with EASY-clamping hub (size 5/10/20 - optional)

alternative: KG-VA

stainless steel

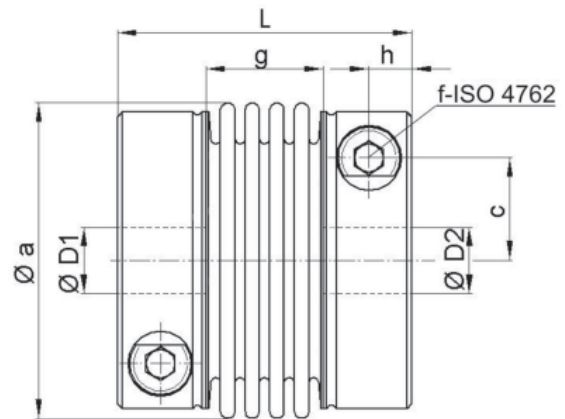
Technical data:

KG KG-VA size	T _N [Nm]	moment of inertia [10 ⁻³ kgm ²]	torsional stiffness [Nm/arcmin]	max. shaft displacement (mm)		axial spring rate [N/mm]	lateral spring rate [N/mm]	mass approx. [kg]	tightening torque of screws [Nm]
				axial ±	lateral				
5	5	0,004	0,9	0,3	0,1	75	400	0,06	2 (1)*
10	10	0,019	2,1	0,4	0,15	85	400	0,14	5 (2,5)*
20	20	0,044	3,4	0,4	0,15	55	360	0,22	10 (5)*
40	40	0,18	9	0,6	0,2	70	450	0,5	16 (8)*
80	80	0,44	14	0,6	0,2	70	600	0,9	40 (22)*
140	140	0,74	20	0,6	0,2	110	1200	1,1	40 (22)*
220	220	1,22	28	0,7	0,2	95	1000	1,5	80 (43)*
350	350	2,6	52	0,8	0,2	90	1300	2,4	135 (75)*
700	700	5,4	106	0,8	0,2	140	2800	3,4	135 (75)*
1300	1300	24	225	0,7	0,2	160	2100	8,5	300 (180)*



Material: bellows: stainless steel 1.4571
 KG-hubs: steel St 52
 KG-VA-hubs: 1.4301/V2A
 screws: DIN 912 – nickel plated
 *(optional stainless steel A4-80)

Note: Connection between bellows and hub: plasma welding-process



Dimensions [mm]: length dimensions according to DIN ISO 2768 cH

KG KG-VA	Øa	c	f	g	h	L	ØD1/2min	ØD1/2max
5	24	7,3	M 3	10	4,5	29	6	11
10	34	10,5	M 4	16	5	38	8	16
20	39,5	13	M 5	17	6	43	10	20
40	56	18	M 6	23	7,5	55	12	32
80	66	22,5	M 8	24	9	61	14	35
140	71	27	M 8	25	9	62	18	42 [40]
220	82	27,5	M 10	28	11,5	73	20	42
350	101	32	M 12	30	12,5	82	22	50 [52]
700	122	40	M 12	37	11,5 [13]	85 [89]	42	64 [68]
1300	157	54	M 16	40	17,5	111	50	90

Versions with longer metal bellows or special hubs are possible if specially required by customer.

Note to Series KG-VA: Stainless steel version general without EASY pin.

*Stainless steel screws possible on request (reduced tightening torques see bracket values)

Ordering example: KG 40 - D1 = 16^{G7} D2 = 24^{H7}
 KG - VA 220 - D1 = 32^{G7} D2 = 35^{G7} stainless steel version
 KG - VA 700 - D1 = 52^{G7} D2 = 52^{G7} stainless steel version + stainless steel screws