

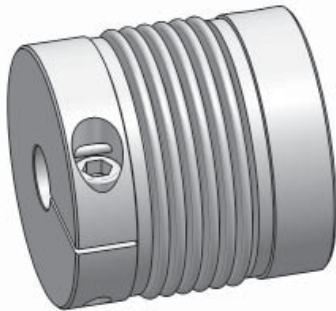
Metal bellows coupling I Series KM

/// 6-corrugation bellows // simple installation with radial EASY-clamping hub // cost-effective standard series

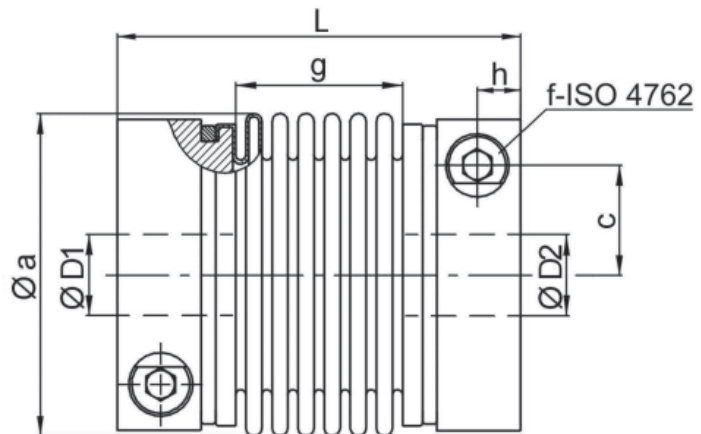
Technical data:

KM	T _N	moment of inertia	torsional stiffness	max. Shaft displacement (mm)		axial spring rate	lateral spring rate	mass approx.	tightening torque of screws
Size	[Nm]	[10 ⁻³ kgm ²]	[Nm/arcmin]	axial ±	lateral	[N/mm]	[N/mm]	[kg]	[Nm]
smaller couplings from 0,4 Nm - 12 Nm see series MKM (page 30)									
20	20	0,14	5,2	0,8	0,25	51	190	0,3	14
35	35	0,14	5,8	0,8	0,25	51	190	0,3	14
60	60	0,29	8,7	0,9	0,3	49	260	0,5	35
80	80	0,79	14	1	0,3	45	280	0,8	65
170	170	0,83	17	1	0,3	80	470	0,8	65
270	270	2,2	32	1	0,3	70	450	1,4	115
400	400	2,4	47	1	0,3	100	640	1,5	115
600	600	4,7	67	1	0,3	100	980	2,2	200
900	900	9	105	1	0,3	145	1000	3,3	200
1300	1300	14	170	1	0,3	130	920	4,2	290
1800	1800	15	260	1	0,3	250	1900	4,5	290

Temperature range: -40°C up to +300°C



Material: bellows: stainless steel
hubs: high tensile strength aluminium
screws: DIN 912 - nickel plated



Dimensions [mm]: length dimensions according to DIN ISO 2768 cH

KM	Øa	c	f	g	h	L	ØD1/2min	ØD1/2max
20	56	19	M 6	30	7,5	70	9	30
35	56	19	M 6	30	7,5	70	14	30
60	66	22	M 8	33	8,5	77	15	34
80	82	28,5	M 10	38	10,5	90	17	43
170	82	28,5	M 10	40	10,5	92	22	43
270	101	35	M 12	42	12	100	27	55
400	101	35	M 12	48	12	106	32	55
600	122	43,5	M 14	52	13,5	116	35	70
900	133	47	M 14	53	18,5	143	40	75
1300	157	54	M 16	55	19	145	60	85
1800	157	54	M 16	55	19	145	65	85

Ordering example: KM 170 - D1 = 30^{G7} D2 = 35^{H6}