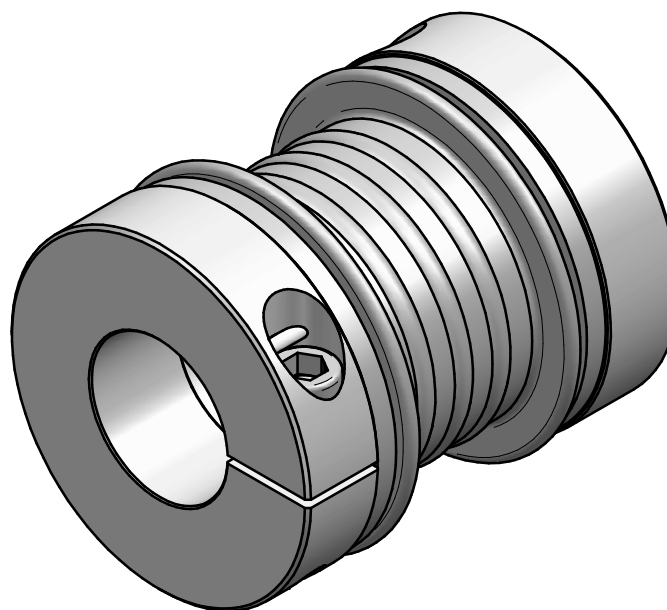


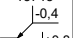

technical data:

nominal torque: 450 Nm
 maximum torque: 650 Nm
 torsional stiffness: 80 Nm/arcmin
 moment of inertia: 0,0021 kgm²
 max. axial shaft displacement: ± 0,4 mm
 max. lateral shaft displacement: 0,3 mm
 axial spring rate: 300 N/mm
 lateral spring rate: 260 N/mm
 temperature range: -40° up to +200°C
 maximum speed: 11.000 rpm
 D1/2min/max = Ø35 / Ø55 mm
 mass: approx. 1,4 kg



material:

bellows: stainless steel
 hubs: high-tensile strength aluminium
 clamping screws: ISO 4762 - 12.9
 press-fit wire: brass

					Werkstoffbezeichnung	Werkstoffnummer	Maßstab
					-	-	1:1
					Rohteil-/Vorteilnummer	Gewicht	
					-	- kg	
		gepr.	20.12.23	IA	metal bellows coupling KR 450 - standard		
		gez.	12.05.17	Be			
Passung	Abmaß		Datum	Name	Benennung		
DIN ISO 13715	DIN ISO 2768-mK				Format A3	Artikelnummer	
	0,5 ... 6 ± 0,1			 D-63839-Kleinwallstadt	Ersatz für	-	ersetzt durch
	6 ... 30 ± 0,2						
	30 ... 120 ± 0,3						
	120 ... 315 ± 0,5						
	315 ... 1000 ± 0,8						