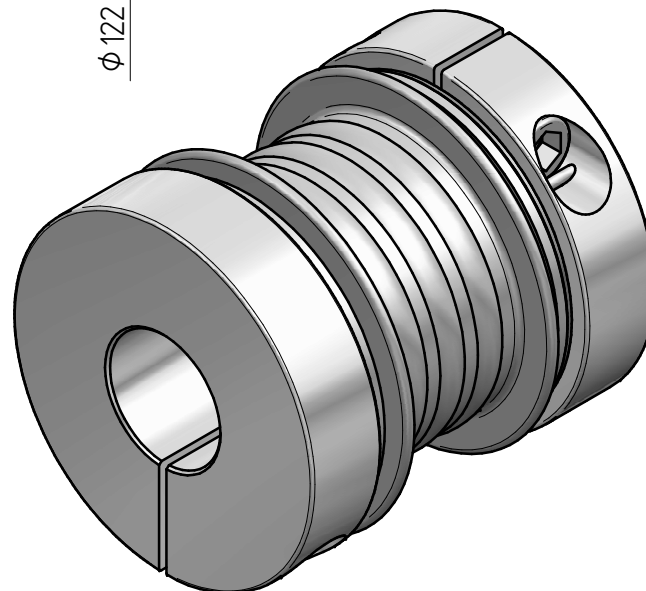


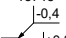
technical data:

nominal torque: 550 Nm
 maximum torque: 800 Nm
 torsional stiffness: 98 Nm/arcmin
 moment of inertia: 0,0047 kgm²
 max. axial shaft displacement: ± 0,5 mm
 max. lateral shaft displacement: 0,5 mm
 axial spring rate: 300 N/mm
 lateral spring rate: 360 N/mm
 temperature range: -40° up to +200°C
 maximum operation speed: 9.000 rpm
 D1/2min/max = 32 / 68 mm
 mass: approx. 2,2 kg



material:

bellows: stainless steel
 hubs: high-tensile strength aluminium
 clamping screws: ISO 4762 - 12.9
 press-fit wire: brass

| | | | | | | | | |
|---|--------------------|----------|----------|------|------------------------|------------------------|-----------------|---------|
| | | | | | | Werkstoffbezeichnung | Werkstoffnummer | Maßstab |
| | | Änderung | | | | - | - | 1:1 |
| | | | | | | Rohteil-/Vorteilnummer | Gewicht | |
| | | | | | | - | - kg | |
| | | | | | | metal bellows coupling | | |
| | | | | | | KR 550 - standard | | |
| Passung | Abmaß | gez. | 20.12.23 | IA | | | | |
| DIN ISO 13715 | DIN ISO 2768-mK | | Datum | Name | Benennung | | | |
|  | 0,5 ... 6 ± 0,1 | | | | Format A3 | MB-083 21948-e | | |
| | 6 ... 30 ± 0,2 | | | | Artikelnummer | | | |
| | 30 ... 120 ± 0,3 | | | | Ersatz für | - | ersetzt durch | |
| | 120 ... 315 ± 0,5 | | | | | - | - | |
| | 315 ... 1000 ± 0,8 | | | | | - | - | |
| | | | | | D-63839-Kleinwallstadt | | | |