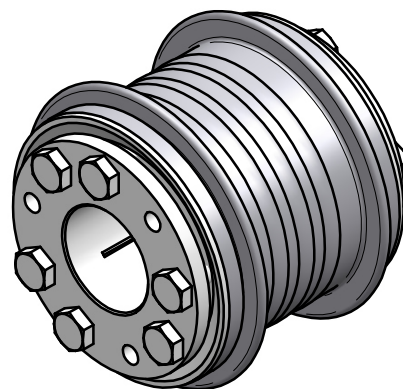


A

technical data:

nominal torque: 1500 Nm
 maximum torque: 3000 Nm
 torsional stiffness: 290 Nm/arcmin
 moment of inertia: 0,019 kgm²
 max. axial shaft displacement: ± 0,6 mm
 max. lateral shaft displacement: 0,5 mm
 axial spring rate: 520 N/mm
 lateral spring rate: 490 N/mm
 temperature range: -40° up to +300°C
 maximum speed: 10.000 rpm
 D1/2min/max = Ø40 / Ø70 mm
 mass: approx. 7,7 kg

brass wire press-fit connection



A-A

material:

bellows: stainless steel
 hubs: heat treated steel
 clamping screws: ISO 4017
 press-fit wire: brass

| | | | | | | |
|---------------|--------------------|------|----------|-------------------------------|-----------------|------------------|
| | | | | Werkstoffbezeichnung | Werkstoffnummer | Maßstab |
| | | | | - | - | 1:1 |
| | | | | Rohteil-/Vorteilnummer | Gewicht | |
| | | | | - | - kg | |
| | | | | Metal bellows coupling | | |
| | | | | KSS 1500 - standard | | |
| Passung | Abmaß | gez. | 10.05.17 | Datum | Name | Benennung |
| DIN ISO 13715 | DIN ISO 2768-mK | | | | | Format A3 |
| -0,4 | 0,5 ... 6 ± 0,1 | | | | | Artikelnummer |
| +0,8 | 6 ... 30 ± 0,2 | | | | | MB-002 13560-e |
| | 30 ... 120 ± 0,3 | | | | | Ersatz für |
| | 120 ... 315 ± 0,5 | | | | | - |
| | 315 ... 1000 ± 0,8 | | | | | ersetzt durch |
| | | | | D-63839-Kleinwallstadt | | |

JAKOB
Antriebstechnik