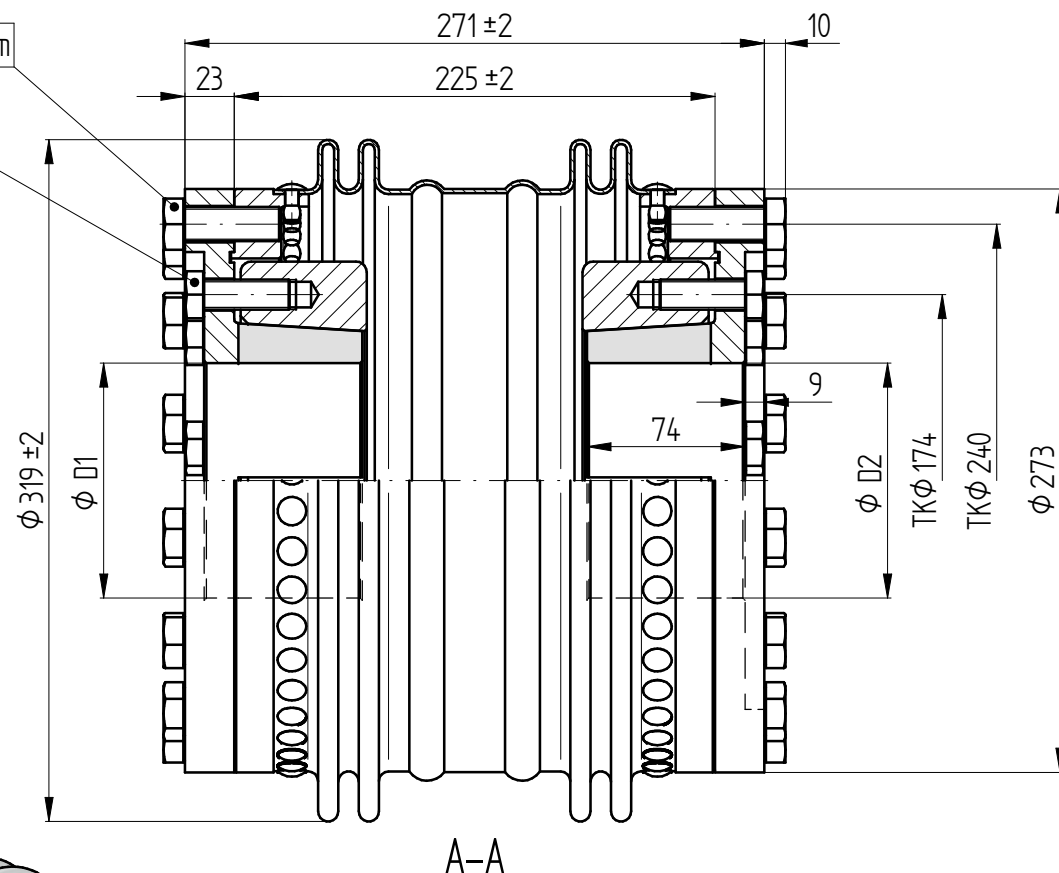
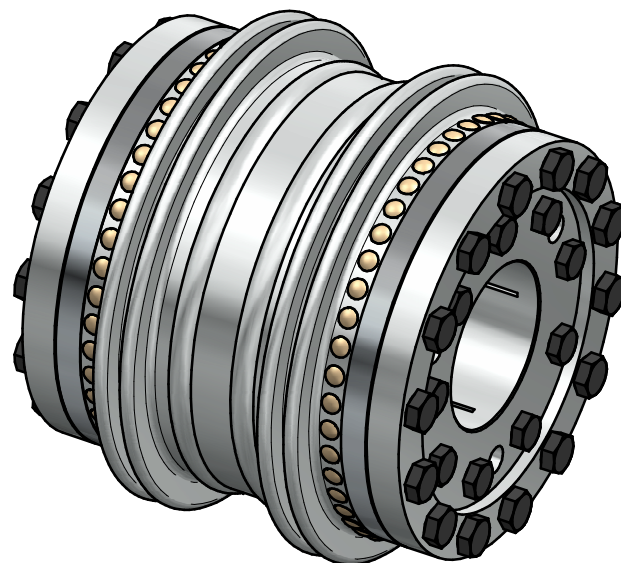
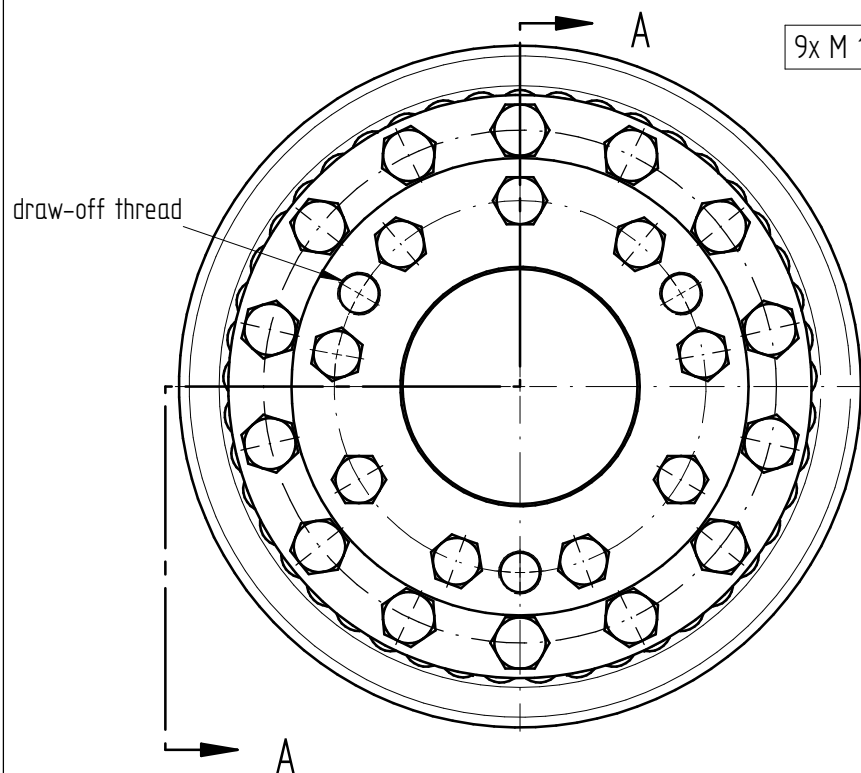


draw-off thread



Technical data:

nominal torque: 12.000 Nm

maximum torque: 17.000 Nm

torsional stiffness: 2.200 Nm/arcmin

axial spring rate: 490 N/mm

angular spring rate: 85 N/°

max. axial shaft misalignment: $\pm 3,5$ mm

max. angular shaft misalignment: $1,4^{\circ}$

nominal radial shaft misalignment: 1,5 mm

mass: approx. 56 kg

moment of inertia: $0,58 \text{ kgm}^2$

D1/D2 min/max: $\phi 80$ / $\phi 130$

material:

bellows: stainless steel

flange: heat-treated steel – burnished

hubs: heat-treated steel – burnished

screws: ISO 4017

[illegible]