

Mechanical Power Clamping Screw I Series SC

Technical data and dimensions [mm]: length dimensions according to DIN ISO 2768 mH

SC Size	nominal clamping force [kN]	max. actuation torque [Nm]	max. clamping stroke [mm]	max. static load [kN]	operating path s [mm]	mass approx. [kg]	thread D*	Ø d	L1	L	SW 1	SW 2
36	40	30	1,5	80	5	0,5	M 36 x 3	19	62	73	13	30
48	80	70	2,2	160	7,5	1,1	M 48 x 3	28	75	90	17	41
64	140	120	2,5	240	8,5	2,5	M 64 x 4	39	90	110	19	55
80	180	140	2,5	320	8,5	5,3	M 80 x 4	39	100	160	19	65
100	250	130	3	400	17	12	TR 100 x 6	60	205	230	14**	65

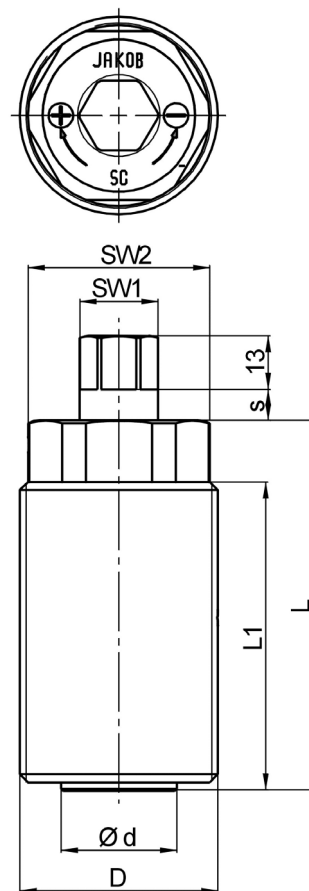
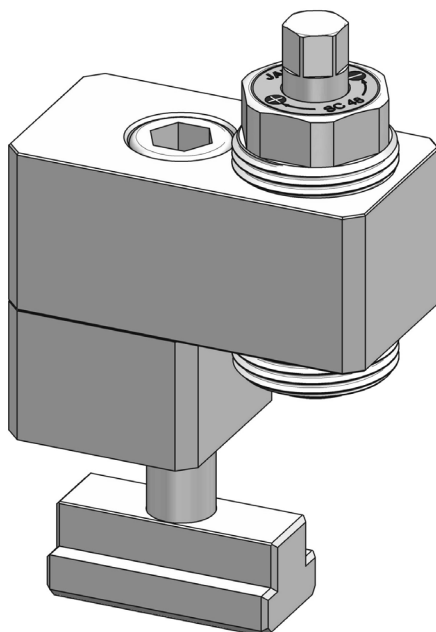
*further sizes and threads (inch thread) available on request
 **hexagon socket - operating pin length: s = 17 mm

allowed temperature range: -40°C up to +250°C

Notice:

- To ensure the required clamping force is achieved and to protect the internal mechanism from damage, we recommend the use of a torque wrench for applying the actuation torque. Under certain conditions, clamping is also acceptable with a standard wrench or socket wrench.
- The clamping screws are lubricated for life and maintenance free under normal operating conditions. A high temperature version of up to 400°C is possible.

Material:
 heat treated steel nitro carburized



Application example:

slide-in-clamp Series MES

- 3 sizes with up to 100 kN clamping force
- various possible applications with variable clamping edge/T-groove sizes: 18/22/28/36
- Technical data available on request or on our homepage: www.jakobantriebstechnik.de