

Distance Couplings | General

Definition - Distance Couplings:

This category is comprised of several backlash-free coupling series with metal bellows or elastomer spider which can cover axial distances of up to 6 m of length. The common main feature of all types is an intermediate part, which is variable in length and can precisely fit the required specifications of the customer. In many cases, they can be used as connecting shaft (synchronizing shaft) and can substitute for conventional constructions of connecting shafts with complicated additional intermediate bearings.

Misalignments, especially parallel misalignments, can be compensated to a higher extent. Furthermore, the stainless material and the easy assembly of all series are valuable assets. A secure, frictional connection with easy operation is assured because of the design in split-hub version (series WD) or with sliding hub (series EKHZ).



Characteristics – JAKOB Distance Couplings:

- ✓ as connecting shaft without additional intermediate bearing
- ✓ up to 6 m axial distance ✓ high operational speed
- ✓ high torsional stiffness ✓ backlash-free, precise torque transfer
- ✓ compensation of misalignments
- ✓ very easy to fit split-hub design
- ✓ optional stainless design ✓ maintenance free

Series EKHZ - Elastomer spider

- ✓ length L = 0,2 - 3 m
- ✓ 7 sizes up to 1600 Nm
- ✓ T max = 90°C
- ✓ cost-effective type for medium speeds

Series WD/WDS - Metal bellows

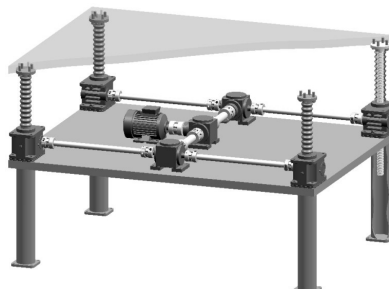
- ✓ WD: length L = 0,2 - 4 m | Tmax = 90°C
- ✓ WDS: length L = 0,2 - 6 m | Tmax = 200°C
- ✓ 7 sizes up to 1600 Nm
- ✓ integrated gimbal / cardan support
- ✓ big pipe diameter for max. speeds
- ✓ high torsional stiffness

Series WDB - Metal bellows

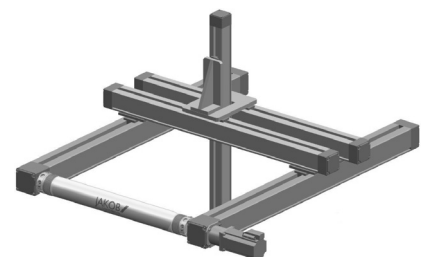
- ✓ lengths from 55 to 300 mm
- ✓ 7 sizes up to 1000 Nm
- ✓ T max = 350°C
- ✓ alternative to WD / WDS for short lengths

Series WD-VA - Metal bellows

- ✓ length L = 0,2 - 3 m
- ✓ 7 sizes up to 1200 Nm
- ✓ T max = 350°C
- ✓ stainless steel version



EKHZ - coupling for lifting table drive



WDS - coupling for multi-axis linear module