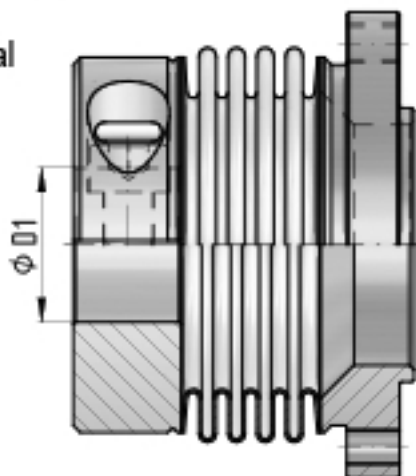


# Overview torque-flange-adaption coupling type KGE

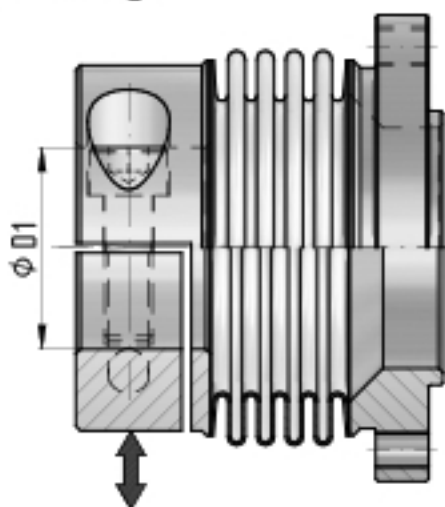
## KGE 220 / 4W - clamping hub

- standard design with radial EASY- clamping hub
- short length (optional 2-corrugation bellows)



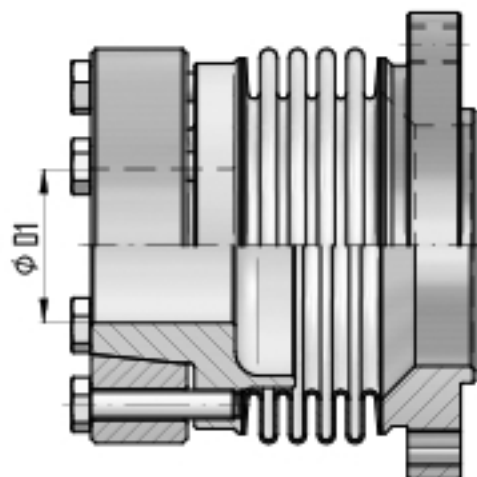
## KGE 220 / 4W - splitted hub design

- simple and easy installation
- advantage at often clamping procedures e. g. at test benches



## KGE 220 / 4W - conical hub

- rotation-symmetric constructive design
- for maximum operating speed



Torque - transducer  
200 Nm

