

Technical data:

nominal clamping force: 40 kN

max. static load: 50 kN

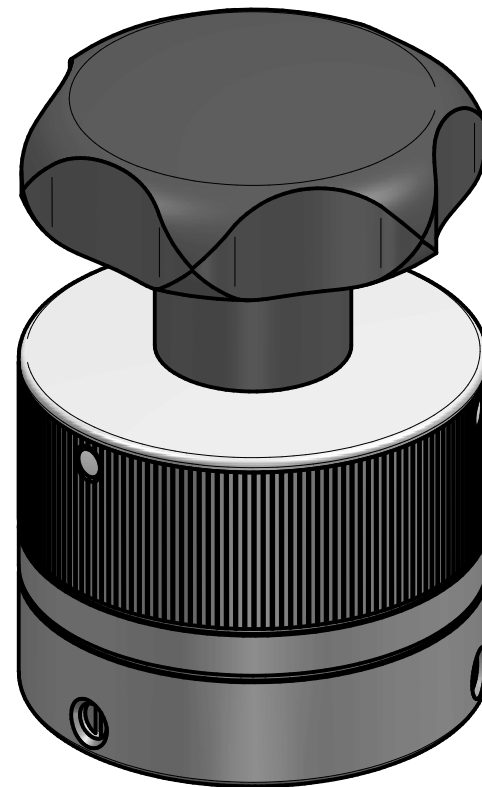
weight: approx. 1,0 kg

max. allowed temperature range: -30°C up to +90°C

material:

heat treated steel – nitro carburized

cover plate: high tensile aluminum



|               |                    |       |      |           |                               |                 |                 |
|---------------|--------------------|-------|------|-----------|-------------------------------|-----------------|-----------------|
|               |                    |       |      |           | Werkstoffbezeichnung          | Werkstoffnummer | Maßstab         |
|               |                    |       |      |           | -                             | -               | 1:1             |
|               |                    |       |      |           | Rohteil-/Vorteilnummer        | Gewicht         |                 |
|               |                    |       |      |           | -                             | - kg            |                 |
|               |                    |       |      |           | Mechanical power clamping nut |                 |                 |
|               |                    |       |      |           | MCA-S - M10                   |                 |                 |
|               |                    |       |      |           | gepr.                         | 14.08.20        | Wu              |
|               |                    |       |      |           | gez.                          | 03.08.15        | Be              |
| Passung       | Abmaß              | Datum | Name | Benennung | Format                        | Artikelnummer   |                 |
| DIN ISO 13715 | DIN ISO 2768-mK    |       |      |           | A4                            | MB-057 09606-e  |                 |
| -0,4          | 0,5 ... 6 ± 0,1    |       |      |           |                               |                 |                 |
| +0,8          | 6 ... 30 ± 0,2     |       |      |           |                               |                 |                 |
|               | 30 ... 120 ± 0,3   |       |      |           |                               |                 |                 |
|               | 120 ... 315 ± 0,5  |       |      |           |                               |                 |                 |
|               | 315 ... 1000 ± 0,8 |       |      |           |                               |                 |                 |
|               |                    |       |      |           | Ersatz für                    | -               | ersetzt durch - |